



CHANGE, INC.

Serving Northern West Virginia
& Jefferson County, Ohio

*CHANGE, Inc. builds
partnerships,
consolidates resources,
and integrates services
to empower families to
overcome the causes of
poverty and live
healthy lives.*



Lisa Mowry, Chief Executive Officer

*Certified Results Oriented Management and Accountability (ROMA) Implementer
Certified Community Action Professional (CCAP).*

- 2004 - Joined CHANGE, Inc. as Development Coordinator.
 - Secured over 350 grants, totaling more than \$35 million in funding over a 14 year period including working alongside other management to obtain the HRSA 330 grant.
- 2018 - Accepted the position of Compliance Manager, overseeing the Risk Management, Compliance, HIPAA, and 340B Programs, as well as becoming the Manager of the Customer Resource Coordinators.
- 2022 - Assumed the role of Chief Executive Officer.

About CHANGE, Inc.

A Community Action Organization and Community Health Center serving:

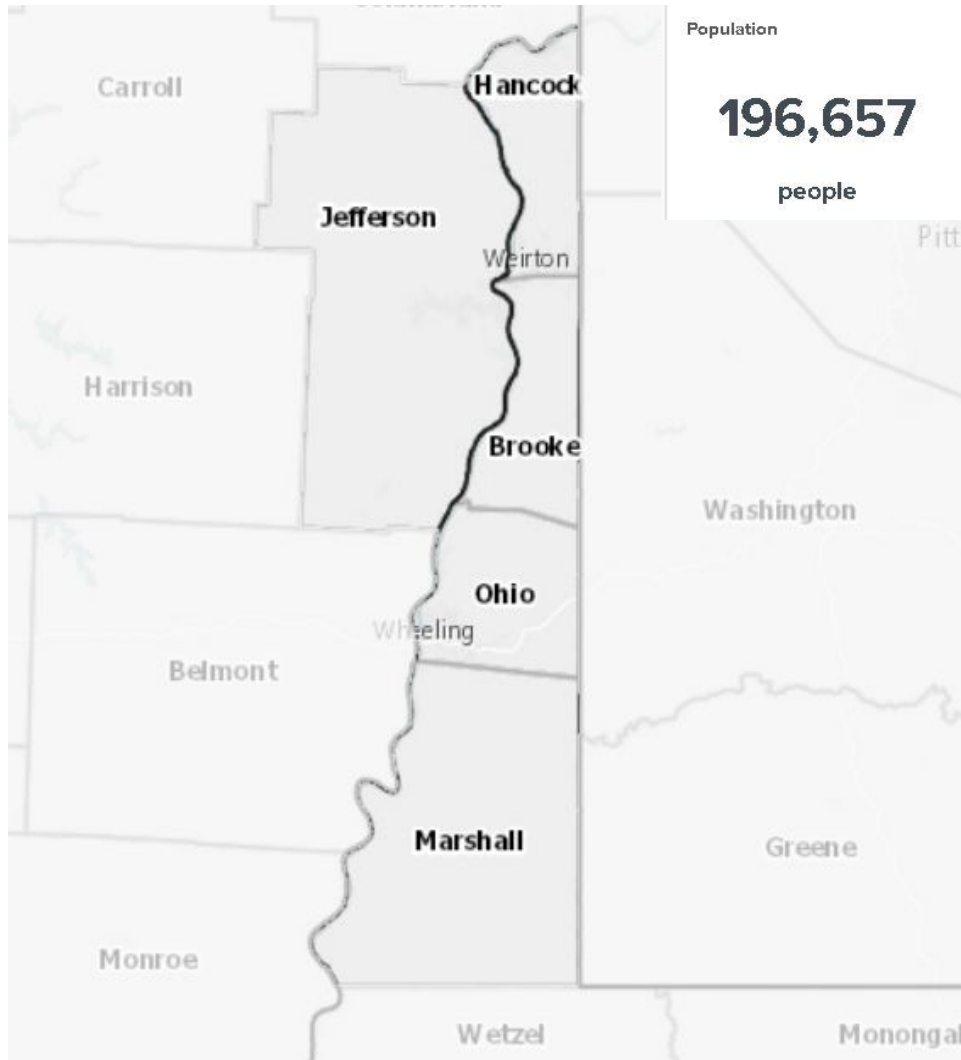
- Northern West Virginia (Hancock, Brooke, Ohio and Marshall Counties)
- Jefferson County, Ohio

Services include:

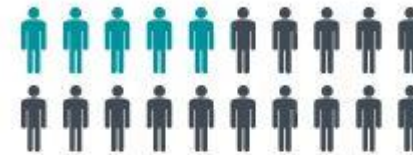
- Family Medical Care, a Federally Qualified Health Center (FQHC), providing Family Health, Gynecology, Dental Services and Behavioral Health.
 - Care is provided through 3 Community Health Centers and 14 School-Based Health Centers.
- Other service areas include, Domestic Violence Awareness, Child Advocacy, Weatherization, Supportive Services for Veterans, HOPWA, Utility Assistance, Youth Nutrition and Housing Counseling.

For a complete list of services and programs visit, www.changeinc.org.

OUR COMMUNITY



Low Income Status



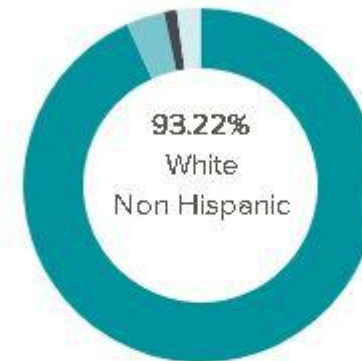
26.3% of people in Our Community are low income*

Urban & Rural Population



Suburban Urban Rural

Race & Ethnicity



Health Insurance



No Insurance
8.6%
Public Insurance
36%
Private Insurance
50.6%



CHANGE, INC.

School-Based Health Centers

Uniting Health and Education
for a Successful Future



NEED

QUALITATIVE

- CHANGE, Inc. was approached by the Principal of Weirton Elementary, regarding the problems they were facing with enrollment due to transitional students. Transitional student is the name given to children whose families jump from county to county, state to state.
- Hancock County was facing a growth in the oil and gas industry due to the Northern Panhandle of WV being part of the Marcella Shale Formation, which created an influx of migrant workers.
- Hancock County was also facing the start of the opioid crisis, which resulted in families jumping county and state lines to avoid CPS, police, and abusive households.
- In WV, no child is permitted to start school without proof of required immunizations. At times, children were delayed 1-2 months, due to missing immunization records or lack of immunizations.

QUANTITATIVE

- 65% of children at Weirton Elementary were eligible for Free and Reduced Lunch
- 26% of children in the school were below the federal poverty level.
- 35% of children in the school were from single parent homes.
- 16.1% of the children were uninsured
- 16.1% of the children were food insecure

PARTNERS

- Hancock County Board of Education
- Weirton Elementary School Personnel
- West Virginia Primary Care Association
- West Virginia School Based Health Care Association
- West Virginia Community Action Partnership
- Funders!!! (Sisters of Saint Joseph, HRSA, CSBG)



School-Based Health Centers (SBHCs)

- Deliver preventive and immediate care, as well as counseling and health education, to students, faculty and staff at school.
- Parental consent is required for enrollment and treatment.
- The SBHC has the capability to serve as the student's Primary Care Provider or to provide supplemental care in coordination with a Primary Care Provider.



Benefits of a SBHC

- Attends to unmet health care needs by placing health care where students are when they need it.
- Provides a safe space to talk about sensitive issues such as depression, relationships, or family problems.
- Supports the school environment by identifying and addressing health problems that may intervene in the learning and teaching process.



Services Provided:

Primary Care

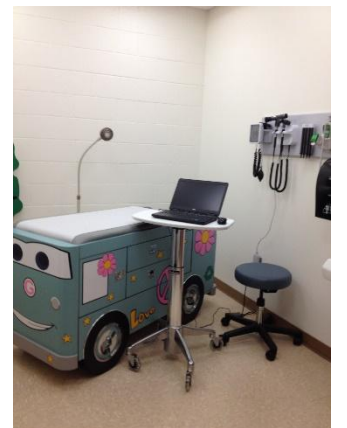
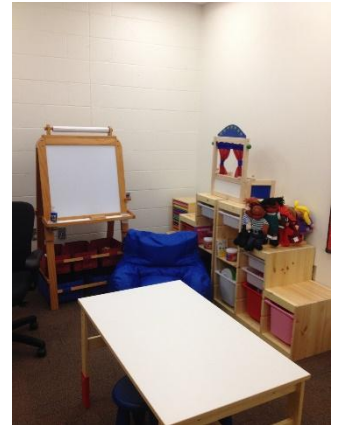
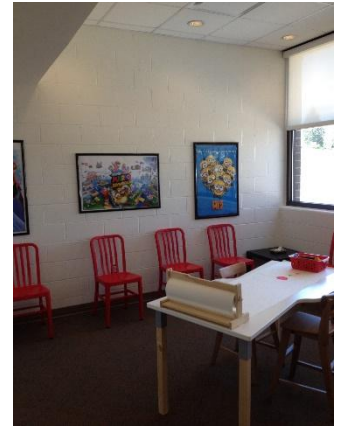
- Well-Child Visits
- Urgent Care
- Immunizations
- Prescription Medications
- Health Education and Counseling

Dental Health

- Oral Screenings
- Education and Preventative Care

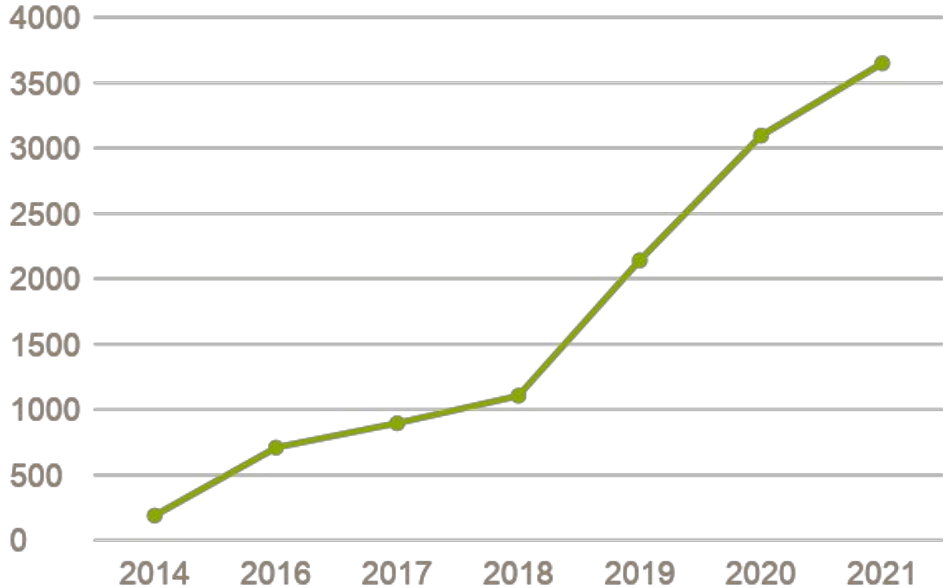
Behavioral Health

- Anger Management
- Crisis Intervention
- Family Conflict
- Grief Counseling
- Therapy
- Medication Management
- Substance Abuse



GROWTH SINCE THE FIRST YEAR

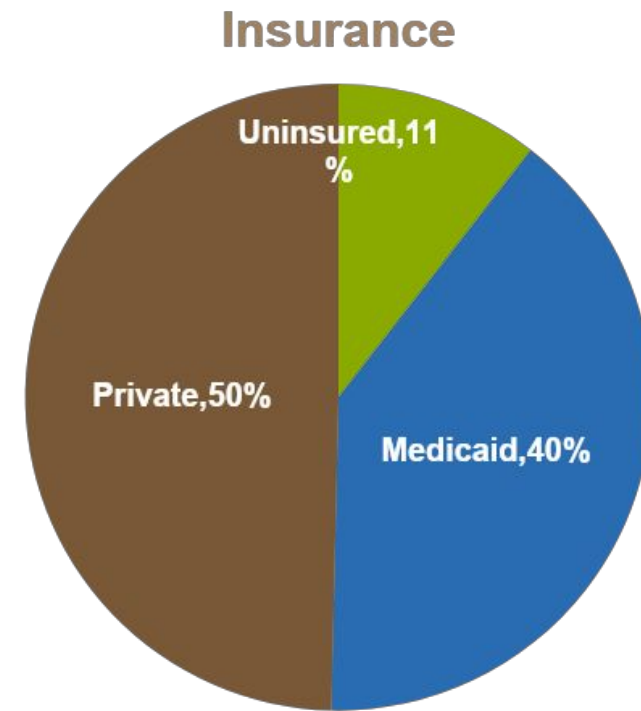
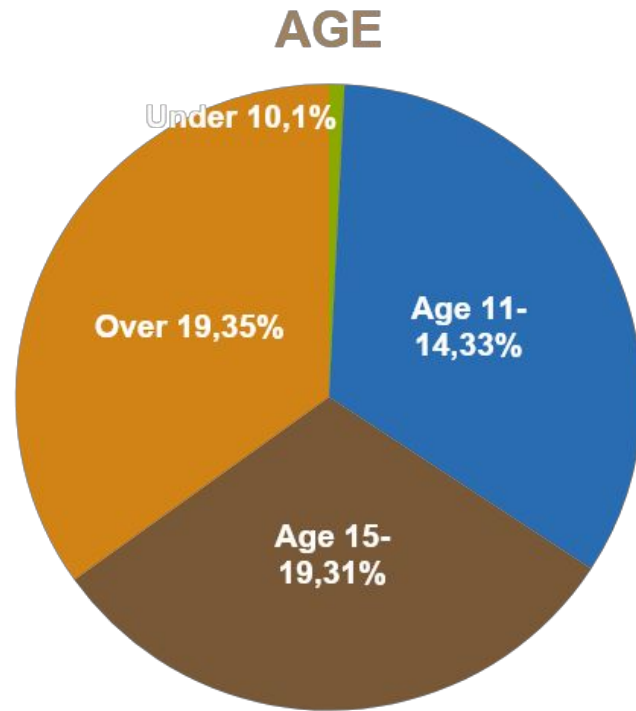
Patients Per Year



2014	Weirton Elementary	Hancock Co.
2018	Brooke High/Middle	Brooke Co.
	Toronto Elem/High	Jefferson Co.
2019	Weir High/Middle	Hancock Co.
2020	Harding Middle	Jefferson Co.
	Steubenville High	Jefferson Co.
	3 Elementary Schools	Jefferson Co.
2021	Brooke ALC	Brooke Co.
2022	4 Elementary Schools	Brooke Co.

From one SBHC in one county serving 189 patients in 2014 to 14 SBHCs in 3 counties serving 3,649 patients
 Feed For Success Backpack Program grew from 25 children to 80 children.

What our SBHC Patients Look Like

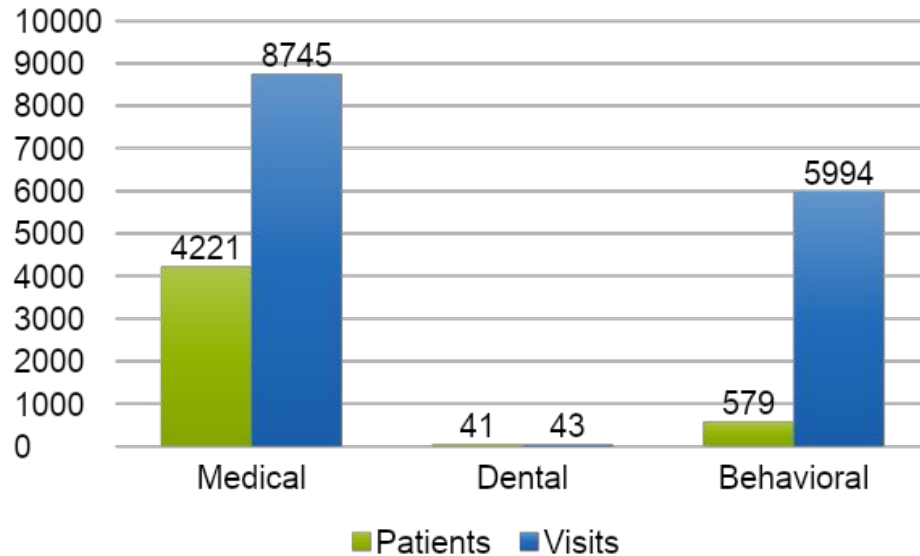


56% Female / 44% Male

78% are White

2% have identified a Sexual Orientation

Services Provided in 2021



2022 has already seen 6,138 patients for 10,574 encounters/services

IMMUNIZATIONS

- 424 Flu Vaccines
- 640 Immunizations

HEALTH OUTCOMES

- 25% are being treated for Depression
- 28% are being educated on nutrition and activity to increase/decrease BMI

COVID IMPACT

- 939 PCR Tests
- 4,098 Rapid Tests
- 589 Vaccines



CHANGE, INC.

3158 Weirton, WV 26062

304-797-7733

www.changing.org

